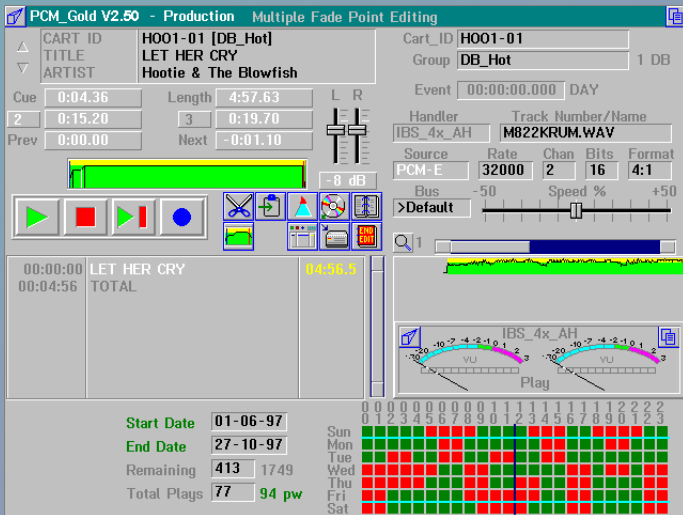
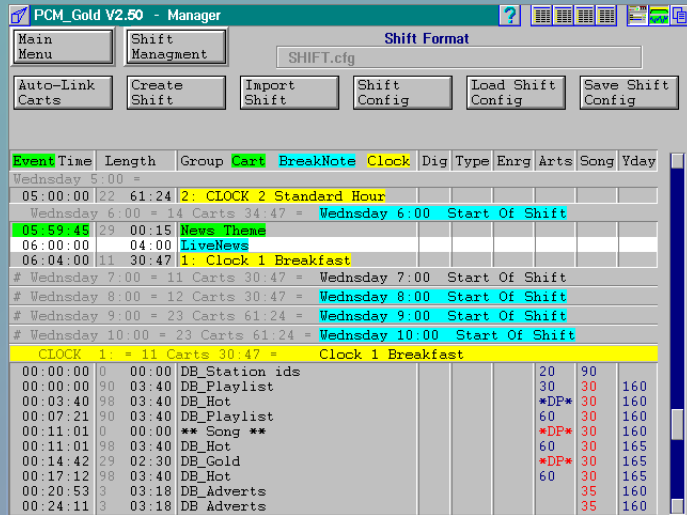


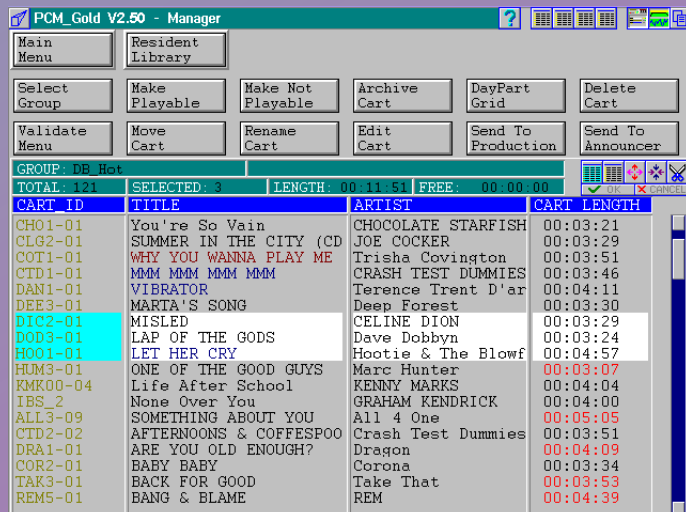
Announcer Module

Scheduling Module



Production Module

Manager Module



PCM Gold 3.

The Ultimate Automation Experience

Announcer Module

| | |
|---|--|
| Full automation or announcer assist at will | Allows the Announcer to have complete control or to run unattended |
| Full graphical interface | Very easy to use - Colour coded information |
| Hot List | A list of Carts, tracks, sound effects that can be played on the spot by a single button |
| Failsafe | Removes chance of 'dead air' without the need for announcers |
| Hotlist | One key start of carts / sound effects |
| Easy editing of shifts | Cut, Past, insert, delete and move any cart to any position |
| Remote Audio Feeds | Remote/Live audio feeds look like a standard cart with with event timing |
| Audio Ducking voice overs | Announcer inserts can fade/duck the playing songs around it. |
| Advanced data base searching | Multiple wildcard searches under any information category |
| Screen Countdown for intro and outro | Show when the vocals of a track start and end |
| Graphical linking of carts | Allows the announcer control of how cart flow together |
| Auto queuing of tracks | The carts are automatically cued without announcer intervention |

Scheduler Module

| | |
|--|--|
| Unlimited number of scheduling formats | Allows formats to be set up for different types of schedules |
| 256 Clocks per format | Common shift layouts can be set up at once |
| Pre-set Timed Events | Automatic scheduling of specified cart(s) to start/stop at set times |
| Dayparting | Controls the time of day/hour individual songs are allowed to play |
| Start & Kill dates | Defines when a song/commercial is to start/end being scheduled |
| Breakable and Unbreakable rules | Controls how tight to adhere to the individual selection rules set |
| Artist Separation | Sets the minimum time allowed between the same artist |
| Song Separation | Sets the minimum time allowed between the same song |
| Yesterday Separation | Prevents the same song from being playing at the same time every day |
| Dig Depth | Sets how far to search into a group for a match |
| Energy | User defined range from 1-9 (music intensity) |
| Track Type | Four letter value defining the type of cart |
| Packets | Group of carts that are treated as one type of cart |
| Graphical grid analysis of scheduled shift | Shows at a quick glance any possible onair problems |
| Fully interfaces into the PCM Gold System | Fully interfaces with the other modules of PCM Gold |
| Fully Graphical Interface | User friendly interface |

Production Module

| | |
|---------------------------------------|--|
| Multi-Track Editing | Dependant only on the number and capabilities of the audio handlers / hardware |
| Non-Destructive Editing | The original recorded audio track is not altered |
| Cue Time | Set where to start playing the audio track from |
| Length | How much of the audio track is to be played |
| Fade In | Controls the audio level fade in time at start of track |
| Fade Out | Controls the audio level fade out time at end of track |
| Up to 8 Fade points | Allows control of audio level and fades during playback |
| Cart Specific Setting of Timed Events | Used by the Announcer module to auto start carts at a specific time |
| Next | Defined place where next song starts relative to the end of the current song |
| Previous | Defined place where current song starts relative to the previous song |
| Multiple Edit Lists | Allows the production staff to work on more than one cart at a time |
| Dayparting Grid | Sets the individual carts/commercials are allowed to be scheduled |
| Start And Kill dates | Sets when a song/commercial is to start and end scheduling from dates |
| Maximum Play | Limits how many times a cart to be scheduled |
| Audio Format | Information about the audio track format, sample rate etc |
| Cart Information | Title, artist, intro, outro user defined, label and apra info etc |

Manager Module

| | |
|---|---|
| Full Control Over the Music Database | Flexible easy to use, view and edit controls |
| Advanced Database Searching | Multiple wildcard searches under any information category |
| Database Maintenance | Rename, Move, Cut, Past,etc |
| Full Backup | Backup and restore of carts to archive media |
| Dayparting colouring of cart list | Colour coded cart names indicating type of dayparting |
| Multiple Cart Information Displayed | User selectable viewing of desired database fields |
| Fully interfaces into the PCM Gold System | Sending of carts to other PCM Gold Modules |

FTP Web Module - New

| | |
|-------------------------|--|
| Website updates | Live update of web showing active onair schedule |
| Support for 9 web pages | Supports 9 webpage formats and upload locations |
| Update minimum time | Set of minimum time between live updates |

Integrated Broadcast Systems

6 Samuel St, PO Box 9427, Christchurch
 New Zealand
 Phone 64 3 338-4664 Fax 64 3 338-4664
 Mobile 021 116-3716
 website: www.sound.co.nz
 email: sales@sound.co.nz

PCM_Gold is a trademark of
 Integrated Broadcast Systems

*The information contained on this sheet is
 subject to change with out notice*

All Rights Reserved © 2005